

**MANLY YACHT CLUB HELLY HANSEN**  
**WOMEN'S CHALLENGE 2025**



**SAILING INSTRUCTIONS**  
**DINGHY CLASSES - SATURDAY 22<sup>nd</sup> MARCH 2025**  
**YACHT CLASSES - SUNDAY 23<sup>rd</sup> MARCH 2025**



Organizing Authority



between Wood St and Stuart St, East Esplanade, Manly,  
PO Box 22, Manly, NSW 1655  
P: 02 9977 4949 E: [womenschallenge@myc.org.au](mailto:womenschallenge@myc.org.au) W: [www.myc.org.au](http://www.myc.org.au)

# GENERAL SAILING INSTRUCTIONS

## 1 RULES

- 1.1 The Organising Authority for the event is the Manly Yacht Club (MYC).
- 1.2 The Race will be governed by;
  - a) the Racing Rules of Sailing (RRS),
  - b) the Special Regulations of Australian Sailing (AS).
- 1.3 A keelboat shall comply with the Special Regulations Part 1 for Category 7. An audited Special Regulations Form for the relevant Category (or higher) shall be submitted with the entry if not already held by MYC.
- 1.4 An off the beach boat shall comply with the Special Regulations Part 2.
- 1.5 The Sailing Office of MYC shall be the Race Committee ("RC") for the purposes of, and with, the powers and discretions contained in RRS 90.1.
- 1.6 Fixed and retractable spinnaker poles and bowsprits will be permitted for the purpose of setting asymmetrical spinnakers. This amends RRS 55.2 and 55.3.
- 1.7 Anchors which protrude from the bow must be removed.

## 2 NOTICES TO COMPETITORS

- 2.1 Notices to Competitors for Saturday's Centreboard racing will be posted on the Official Notice Board located at <https://www.myc.org.au/notice-board/>
- 2.2 Notices to Competitors for Sunday's Yacht race will be posted on the Official Notice Board of the Sydney Harbour Women's Keelboat Series located at <https://app.sailsys.com.au/club/27/results/series/4045/noticeboard>

## 3 CHANGES TO THE SAILING INSTRUCTIONS

- 3.1 Any change to the Sailing Instructions will be posted before 0830hrs on the day it will take effect except that any change to the schedule of races will be posted prior to 1800hrs on the day before it will take effect.
- 3.2 Any change to the Sailing Instructions made 'afloat' will be indicated by the display of Code Flag L and accompanied by two sound signals. The change will be communicated on the designated course VHF channel 72 and/or displayed on the committee boat.

## 4 SIGNALS MADE ASHORE

- 4.1 Signals made ashore will be displayed from the Signal Mast on the end of the MYC wharf.
- 4.2 When flag AP is displayed ashore, '1 minute' is replaced with 'not less than 60 minutes' in the race signal AP.

## 5 RACING AREA

- 5.1 Racing will be conducted on the waters of Sydney Harbour.
- 5.3 The Committee Vessel will announce the starting area on the Race Management Channel VHF 72, when on station.

## 6 MARKS

- 6.1 Boats shall pass on the safe water side of the following Cardinal Marks:
  - a) Gowland Bombora (Dobroyd) – All Marks
  - b) Sow and Pigs Reef– All Marks
  - c) Shark Island– South and West Marks
- 6.2 Boats shall not sail in the following prohibited areas:
  - a) The area bounded by imaginary lines projected from the shore joining the West, South and East Cardinal Marks surrounding Gowland Bombora.
  - b) The area bounded by imaginary lines joining the North, East, South and West Cardinal Marks surrounding Sow and Pigs Reef.

- c) The Area between AS Mark Shark Island and Shark Island is a continuing obstruction and no boat shall pass between them.
- 6.3 For the purpose of RRS 19 and 20, all Cardinal Marks surrounding the Gowland Bombora and the Sow and Pigs Reef, and all imaginary straight lines projected between such marks, shall be deemed obstructions.
- 6.4 All competitors are requested to remain to the starboard side of shipping channels where practicable.
- 6.5 Competitors must keep clear of commercial shipping, defence shipping, ferries displaying orange diamonds and vessels engaged in towing.
- 6.6 An active exclusion zone exists around ships and ferries that extends 30m either side; 30m from the stern; 200m ahead of a ferry and 500m ahead of any ship. Competitors must not pass between a ship and an escort vessel.

## **7 ALTERNATIVE PENALTIES**

- 7.1 Your attention is turned to RRS 44.1 and 44.2.
- 7.2 For an infringement of RRS Part 2, the Two-Turns Penalty (RRS 44.2) shall apply.

## **8 ABANDONED RACES**

- 8.1 Abandoned races will not be re-sailed. Race fees are non-refundable for abandoned races.

## **9 PROTESTS**

- 9.1 Protest forms are available at the MYC Sailing Office. Protests and requests for redress or reopening shall be delivered there within the appropriate time limit.
- 9.2 The protest time limit is 90 minutes after the last boat has finished the last race of the day or the race committee signals no more racing today, whichever is later.
- 9.3 Notices will inform competitors of hearings in which they are parties or named as witnesses.
- 9.4 Notices of protests will be posted on the MYC Noticeboard at the club for Saturday races and for Sunday racing on <https://app.sailsys.com.au/club/27/results/series/2715/noticeboard> to inform boats under RRS 63.1(a).

## **10 RADIO COMMUNICATION**

- 10.1 Except in an emergency while racing, a boat shall neither make radio transmissions nor receive radio transmissions not available to all boats. This restriction also applies to mobile telephones.
- 10.2 Yachts shall maintain a listening watch on VHF Channel 72 prior to and for the duration of the race.
- 10.3 Competitors retiring from the race shall advise the RC on Channel 72 or the Sailing Office by phone 99774949 as soon as practicable.

## **11 RESPONSIBILITY**

- 11.1 Competitors participate in the MYC Women's Challenge at their own risk. Special attention is drawn to RRS Fundamental Rule 3, which states: "The responsibility for a boat's decision to participate in a race or to continue racing is hers alone".
- 11.2 The Organising Authority, Event Sponsors, and their respective officers, employees, volunteers and members accept no liability for any injury, loss or damage that may be suffered by any competitor, and any liability for harm to persons that results from breach of an express or implied warranty that the MYC Women's Challenge and all services relating thereto will be conducted or rendered with reasonable care and skill is excluded.
- 11.3 Neither MYC, nor the event sponsors, are responsible for the seaworthiness of a boat whose entry is accepted or the sufficiency or adequacy of its equipment.

# SATURDAY, 22<sup>nd</sup> MARCH 2025

## HANSA 303 DINGHIES, O'PEN SKIFFS, LASERS

### 1. Schedule of Races

- 1.1 Racing is scheduled for **Saturday, 22nd March 2025**.
- 1.2 There will be a pre-race briefing for the Hansa 303 Dinghy Class on the MYC rigging deck at 0900 hours.
- 1.3 There will be a pre-race briefing for the O'pen Skiffs and lasers at 1300 hours on the MYC rigging deck.
- 1.4 There are up to three races scheduled for all classes/divisions.
- 1.5 A division must be constituted by a minimum of three boats.
- 1.6 The scheduled time of the warning signal of the first race for each class or division is shown below. Races will be started no earlier than times shown. Times shall be taken from visual signals; the failure of a sound signal shall be disregarded.
- 1.7 When more than one race will be held on the same day, the warning signal for each succeeding race will be made as soon as practicable after the finish of the previous race.

WARNING	CLASS	FLAG
1000 hours	Hansa 303 Dinghy – All Female	Numeral Pennant 1
1330 hours	O'pen Skiff – Female Helm	O'pen Skiff class flag
1340 hours	Laser – Female Helm	Laser Class flag

### 2. Class Flags

- 2.1 The class flags will be as follows:

CLASS	FLAG
Hansa 303 Dinghy – All Female	Numeral Pennant 1
O'pen Skiff – Female Helm	O'pen Skiff Class Flag
Laser – Female Helm	Laser Class Flag

### 3. The Courses

- 3.1 Courses for Hansa 303 Dinghy are show in **Appendix A1**.
- 3.2 Courses for Laser and O'pen Skiff classes are shown in **Appendix A2**.

### 4. The Start

- 4.1 All races will be scratch starts from the Committee Boat. The starting line will be between the flagstaff on the Committee Boat at the starboard end and an orange spherical buoy at the port end. The Committee Boat will fly the MYC Burgee and an Orange Flag when it is on station.

### 5. The Finish

- 5.1 The finish line will be between the staff or halyard displaying a blue flag on the Committee vessel and a buoy which may be at either end of the line.

### 6. Time Limits

- 6.1 The time limit for each race shall be 60 minutes or shorter at the discretion of the Race Committee.

### 7. Further Information

- 7.1 A presentation will take place back at the club after racing.

# SUNDAY, 23<sup>rd</sup> MARCH 2025

## YACHTS, YNGLINGS, J24 CLASSES

### 1. Schedule of Races

- 1.1 Racing is scheduled for **Sunday, 23<sup>rd</sup> March 2025**.
- 1.2 The following classes/divisions may be sailed:
- Yachts – All Female – Division 1 & Division 2
  - Yachts – Female Helm – Division 1 & Division 2
  - Ynglings – Female Helm – are to be included in Division 2, check start list.
  - J24s – Female Helm – are to be included in Division 2, check start list.
- 1.3 There is one race scheduled for each class/division.
- 1.4 A division must be constituted by a minimum of four boats.
- 1.5 The scheduled time of the warning signal for each class or division is shown below. Races will be started no earlier than times shown. Times shall be taken from visual signals; the failure of a sound signal shall be disregarded.

WARNING	CLASS/DIVISION	FLAG
1225 hours	Yachts – All Female – Division 1	Class Flag D
1225 hours	Yachts – Female Helm – Division 1	Class Flag D
1230 hours	Yachts – All Female – Division 2	Class Flag E
1230 hours	Yachts – Female Helm – Division 2	Class Flag E

### 2. Class Flags

- 2.1 The class flags will be as follows:

CLASS	FLAG
Yachts – All Female – Division 1	Class Flag D
Yachts – Female Helm – Division 1	Class Flag D
Yachts – All Female – Division 2	Class Flag E
Yachts – Female Helm – Division 2	Class Flag E

### 3. The Courses

- 3.1 Courses for Yachts – Division 1 are shown in **Appendix A3**.
- 3.2 Courses for Yachts – Division 2, Ynglings and J24s are shown in **Appendix A4**.

### 4. The Start

- 4.1 All races will be scratch starts from the Committee Boat. The starting line will be between the flagstaff on the Committee Boat at the starboard end and an orange inflatable buoy at the port end. The Committee Boat will fly the MYC Burgee and an Orange Flag when it is on station.

### 5. The Finish

- 5.1 The finishing line will be between the staff or halyard displaying a blue flag on the Committee vessel and a yellow inflatable buoy which may be at either end of the line.

### 6. Time Limits

- 6.1 Subject to 6.2 and 6.3, the time limit for yachts shall be 1630 hours.
- 6.2 If the first boat in a division finishes between 1600 hours and 1630 hours the time limit shall be extended by 30 minutes from the finishing time of the first boat in that division.
- 6.3 If a race is postponed for any reason the time limit will be extended by the length of the postponement or for 30 minutes whichever is less.

### 7. Further Information

- 7.1 There will be a presentation back at the club this year after racing.

## FIXED AUSTRALIAN SAILING (AS) MARKS

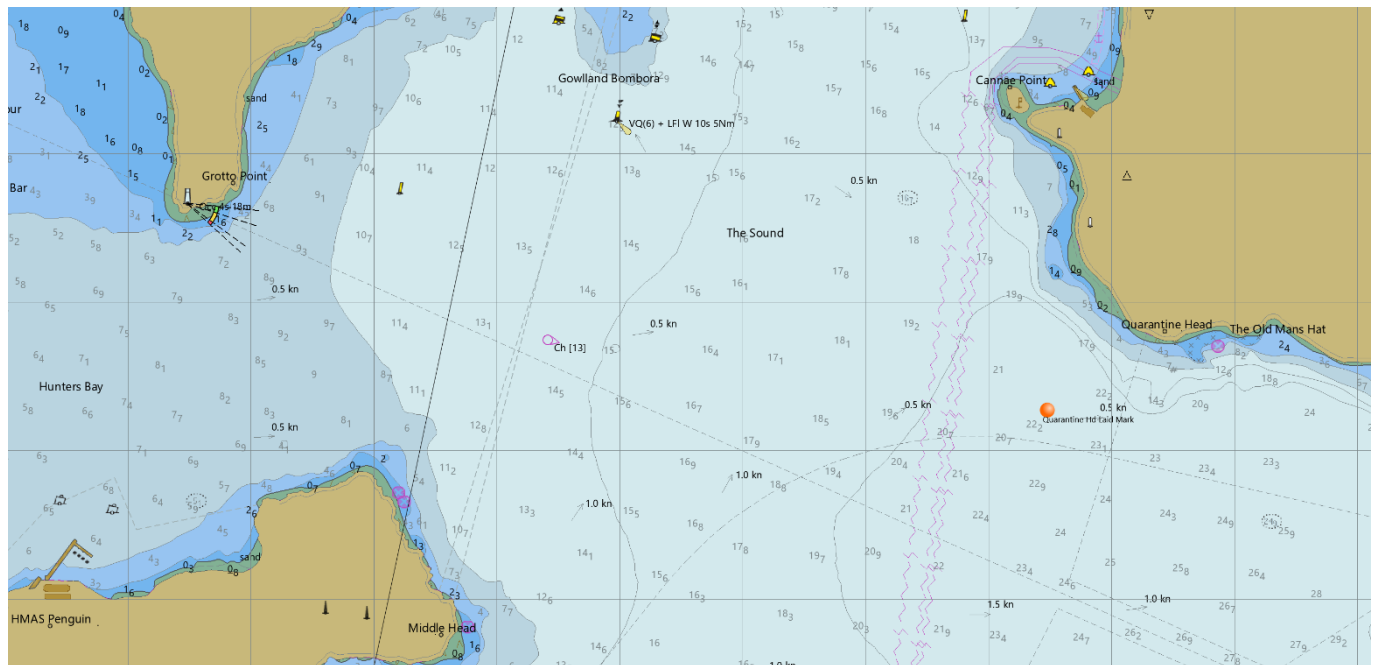
Previously Yachting Australia or Yachting New South Wales (YA Marks), these are spar shape and yellow in colour. Locations are approximate and marks may be absent after heavy weather.

BB	Beashel Buoy AS,	In the vicinity of Sow & Pigs Reef
LB	Lady Bay AS,	AS mark 150m west of Lady Bay
CP	Cannae AS	AS mark 200m West of Cannae Point Flagstaff
CBN	Chowder North AS,	The northern most AS mark in Chowder Bay, 200m SW of Georges Head
EC	Eastern Channel AS,	AS mark South of Sow & Pigs, 150m NW of Eastern Channel Pile
EB	Edwards AS,	AS mark Edwards Beach, 200m north east of Rocky Point, Balmoral
GP	Grotto AS,	AS mark 500m east of Grotto Point
MW	Manly West AS	AS mark Manly West in North Harbour
ME	Manly East AS,	AS mark Manly East in North Harbour
NP	Nielson Park AS,	AS mark In the vicinity of Neilson Park
OB	Obelisk AS,	AS mark in Obelisk Bay
RP	Rocky AS,	AS mark Edwards Beach, 200m south east of Rocky Point, Balmoral
SIM	Shark Island AS & Shark Island,	AS mark SE of Shark Island, Shark Island
TB	Taylors Bay AS,	AS mark 600m north east of Bradleys Head
RB	Rose Bay AS,	AS mark Rose Bay Lat. 33-49-424 Lon. 151-15-299

**MYC laid marks are orange inflatable marks.**

### Quarantine Head (Laid Mark)

**Approx position LAT 33 49.37 S LONG 151 17.15 E**

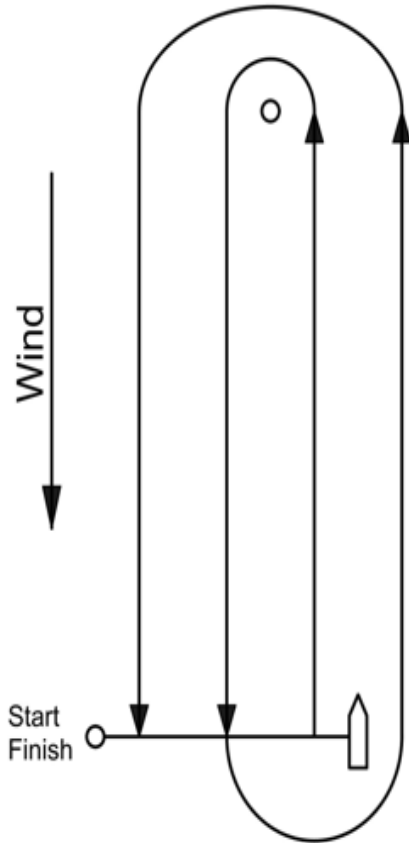




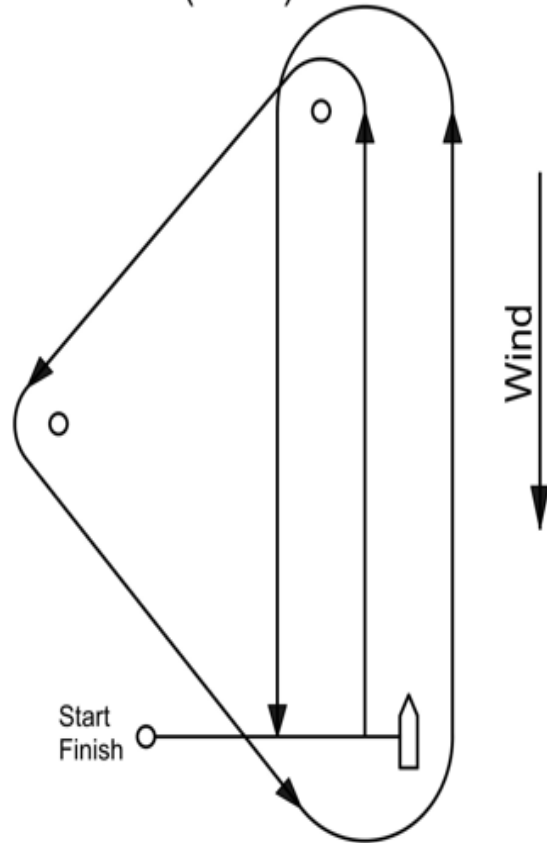
## APPENDIX A1 – HANSA 303 and O’PEN SKIFF COURSES

Courses may be sailed to Port or Starboard as indicated by a red or green flag displayed on the Committee Boat. If no flag is displayed the courses will be sailed as shown. For all courses, the leg length from start line to top mark should be around 0.4NM.)

Course 1 (1 NM)



Course 2 (1 NM)



## APPENDIX A2 – LASER COURSES and O’PEN SKIFF COURSES

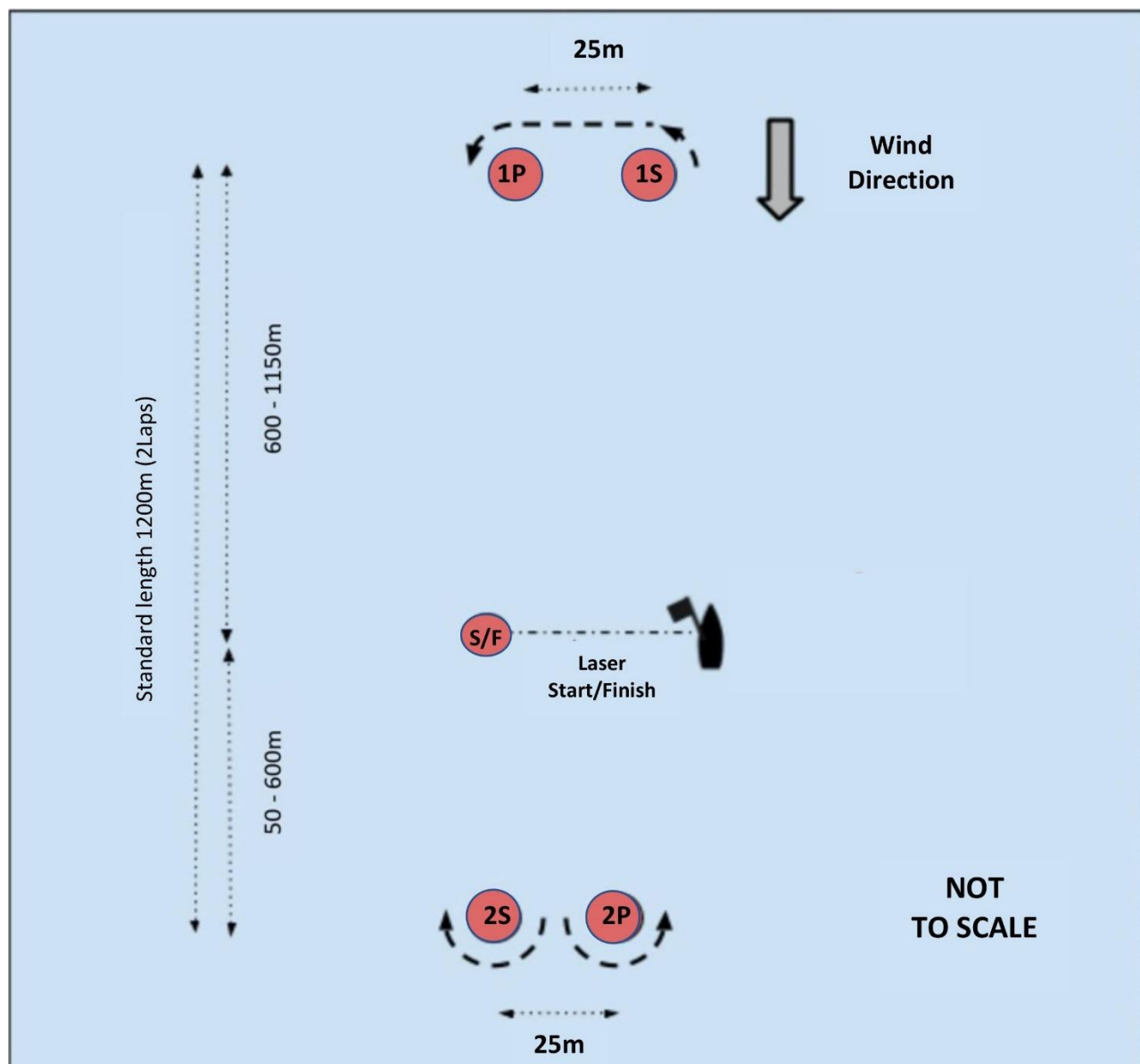
The Course described below shall be displayed on a board on the roof of the start boat, before or with the Warning Signal.

Marks 1S, 1P shall be rounded to port.

Marks 2S/2P may be replaced by a singular Mark 2, which shall be rounded to port and coloured the same as the two gate marks it replaces.

Course	Course Descriptions
1	Start – 1S – 1P – 2S/2P – 1S – 1P – 2S/2P – Finish
2	Start – 1S – 1Pa – 2S/2P – 1S – 1P – 2S/2P – 1S – 1P – 2S/2P – Finish
3	Start – 1S – 1P – 2S/2P – 1S – 1P – 2S/2P – 1S – 1P – 2S/2P – 1S – 1P – 2S/2P – Finish

The indicative course layout is shown below. The diagram is approximate only and is not to scale.





## APPENDIX A3 - WOMEN'S CHALLENGE DIV 1 COURSES

All marks to starboard. All distances are approximate.

*Note - In the event of the course being shortened before the start, flag S will be displayed with the course signal with two sound signals. Boats are to proceed directly to the finish line after leaving the mark indicated by an asterix (\*) in the courses listed below.*

### **COURSE 1** NE 13.5nm

1. Start Hunters Bay
2. Manly West AS,
3. Manly East AS
4. Rocky Point AS,
5. Edwards Beach AS
6. Cannae Point AS,
7. Taylors Bay AS (\*)
8. Cannae Point AS,
9. Obelisk Bay AS,
10. Finish North Harbour

### **COURSE 2** E 13.5nm

1. Start Hunters Bay
2. Laid Mark Quarantine Head
3. Rocky Point AS,
4. Edwards Beach AS
5. Laid Mark Quarantine Head
6. Grotto Point AS,
7. Cannae Point AS
8. Rocky Point AS,
9. Edwards Beach AS (\*)
10. Laid Mark Quarantine Head
11. Rocky Point AS,
12. Edwards Beach AS
13. Finish North Harbour

### **COURSE 3** SE 13.5nm

1. Start Grotto Point
2. Rose Bay AS,
3. Taylors Bay AS
4. Rose Bay AS,
5. Grotto Point AS (\*)
6. Lady Bay AS,
7. Grotto Point AS
8. Finish Watsons Bay

### **COURSE 4** S 13.5nm

1. Start North Harbour
2. Lady Bay AS
3. Manly West AS,
4. Manly East AS
5. Eastern Channel AS
6. Manly West AS,
7. Manly East AS (\*)
8. Lady Bay AS,
9. Manly West AS,
10. Manly East AS
11. Finish North Harbour

### **COURSE 5** SW 13.5nm

1. Start North Harbour
2. Rocky Point AS,
3. Edwards Beach AS
4. Cannae Point AS,
5. Taylors Bay AS
6. Cannae Point AS (\*)
7. Chowder Bay South AS,
8. Cannae Point AS

### **COURSE 6** W 12nm

1. Start North Harbour
2. Rocky Point AS,
3. Edwards Beach AS
4. Laid Mark Quarantine Head
5. Rocky Point AS,
6. Edwards Beach AS
7. Cannae Point AS
8. Rocky Point AS,
9. Edwards Beach AS (\*)
10. Laid Mark Quarantine Head
11. Grotto Point AS
12. Finish North Harbour

### **COURSE 7** NW 13nm

1. Start Camp Cove
2. Rocky Point AS,
3. Edwards Beach AS
4. Lady Bay AS,
5. Grotto Point AS
6. Lady Bay AS,
7. Grotto Point AS
8. Lady Bay AS (\*)
9. Manly West AS,
10. Manly East AS
11. Lady Bay AS
12. Finish Grotto Point

### **COURSE 8** N 13.5nm

1. Start Camp Cove
2. Manly West AS,
3. Manly East AS
4. Lady Bay AS,
5. Cannae Point AS
6. Eastern Channel AS (\*)
7. Manly West AS,
8. Manly East AS
9. Lady Bay AS
10. Finish North Harbour

### **COURSE 9** NE alt. 13nm

1. Start Hunters Bay
2. Manly West AS,
3. Manly East AS
4. Lady Bay AS,
5. Taylors Bay AS (\*)
6. Cannae Point AS,
7. Taylors Bay AS
8. Finish North Harbour

### **COURSE 10** S alt. 12nm

1. Start North Harbour
2. Shark Island AS,
3. Shark Island (\*)
4. Manly West AS,
5. Manly East AS
6. Neilson Park AS,
7. Finish North Harbour

### **COURSE 11** SE OR SW alt. 13nm

1. Start North Harbour
2. Cannae Point AS
3. Rocky Point AS,
4. Edwards Beach AS
5. Grotto Point AS,
6. Lady Bay AS
7. Rose Bay AS,
8. Taylors Bay AS (\*)
9. Grotto Point AS,
10. Lady Bay AS
11. Finish North Harbour

## APPENDIX A4 – WOMEN'S CHALLENGE DIV 2 COURSES

All marks to starboard. All distances are approximate.

*Note - In the event of the course being shortened before the start, flag S will be displayed with the course signal with two sound signals. Boats are to proceed directly to the finish line after leaving the mark indicated by an asterix (\*) in the courses listed below.*

### **COURSE 1** NE 11nm

1. Start Hunters Bay
2. Manly West AS,
3. Manly East AS
4. Rocky Point AS,
5. Edwards Beach AS
6. Cannae Point AS,
7. Obelisk Bay AS (\*)
8. Cannae Point AS,
9. Obelisk Bay AS
10. Finish North Harbour

### **COURSE 2** E 12nm

1. Start Hunters Bay
2. Laid Mark Quarantine Head,
3. Grotto Point AS
4. Laid Mark Quarantine Head,
5. Grotto Point AS
6. Cannae Point AS
7. Rocky Point AS,
8. Edwards Beach AS (\*)
9. Laid Mark Quarantine Head
10. Rocky Point AS,
11. Edwards Beach AS
12. Finish North Harbour

### **COURSE 3** SE 11.5nm

1. Start Grotto Point,
2. Neilson Park AS,
3. Chowder Bay South AS
4. Rose Bay AS,
5. Grotto Point AS (\*)
6. Lady Bay AS,
7. Grotto Point AS
8. Finish Watsons Bay

### **COURSE 4** S 11.5nm

1. Start North Harbour
2. Eastern Channel AS,
3. Manly West AS,
4. Manly East AS (\*)
5. Lady Bay AS
6. Manly West AS,
7. Manly East AS
8. Finish North Harbour

### **COURSE 5** SW 11.5nm

1. Start North Harbour
2. Rocky Point AS,
3. Edwards Beach AS
4. Cannae Point AS,
5. Obelisk Bay AS
6. Cannae Point AS (\*)
7. Chowder Bay South AS,
8. Cannae Point AS
9. Finish Hunters Bay

### **COURSE 6** W 11nm

1. Start North Harbour
2. Rocky Point AS,
3. Edwards Beach AS
4. Laid Mark Quarantine Head
5. Grotto Point AS,
6. Cannae Point AS
7. Rocky Point AS,
8. Edwards Beach AS (\*)
9. Laid Mark Quarantine Head,
10. Grotto Point AS
11. Finish North Harbour

### **COURSE 7** NW 10nm

1. Start Camp Cove
2. Obelisk Bay AS
3. Lady Bay AS,
4. Grotto Point AS
5. Lady Bay AS,
6. Grotto Point AS
7. Lady Bay AS (\*)
8. Manly West AS,
9. Manly East AS
10. Lady Bay AS
11. Finish Grotto Point

### **COURSE 8** N 10nm

1. Start Camp Cove
2. Cannae Point AS,
3. Lady Bay AS
4. Cannae Point AS,
5. Eastern Channel AS (\*)
6. Manly West AS,
7. Manly East AS
8. Lady Bay AS
9. Finish North Harbour

### **COURSE 9** NE alt. 11nm

1. Start Hunters Bay
2. Manly West AS,
3. Manly East AS
4. Lady Bay AS
5. Chowder Bay South AS (\*)
6. Cannae Point AS,
7. Chowder Bay South AS
8. Finish North Harbour

### **COURSE 10** S alt. 11nm

1. Start North Harbour
2. Neilson Park AS (\*)
3. Manly West AS,
4. Manly East AS
5. Neilson Park AS
6. Finish North Harbour

### **COURSE 11** SE OR SW alt. 10nm

1. Start North Harbour,
2. Cannae Point AS
3. Rocky Point AS,
4. Edwards Beach AS
5. Grotto Point AS
6. Lady Bay AS,
7. Neilson Park AS
8. Chowder Bay South AS (\*)
9. Grotto Point AS,
10. Lady Bay AS
11. Finish North Harbour

## LOCATION OF HARBOUR MARKS

