

**MANLY YACHT CLUB HELLY HANSEN
WOMEN'S CHALLENGE 2021
26th ANNIVERSARY**



Sailing Instructions

Saturday 27th and Sunday 28th March 2021



Organising Authority

Manly Yacht Club

Manly Yacht Club, between foot of Wood St and Stuart St, East Esplanade, Manly,
PO Box 22, Manly, NSW 1655

P: 02 9977 4949 E: womenschallenge@myc.org.au W: www.myc.org.au

SAILING INSTRUCTIONS

1.0 RULES

- 1.1 The Organising Authority for the event is the Manly Yacht Club (MYC).
- 1.2 The Race will be governed by;
 - a) the Racing Rules of Sailing (RRS),
 - b) the 2021-2024 Special Regulations of Australian Sailing (AS).
- 1.3 A keelboat shall comply with the Special Regulations Part 1 for Category 7. An audited Special Regulations Form for the relevant Category (or higher) shall be submitted with the entry if not already held by MYC.
- 1.4 An off the beach boat shall comply with the Special Regulations Part 2.
- 1.5 All boats shall comply with any relevant class rules, such as the prescriptions of the Australian-Hansa Class Association.
- 1.4 The Sailing Office of MYC shall be the Race Committee ("RC") for the purposes of, and with, the powers and discretions contained in RRS 90.1.
- 1.5 Fixed and retractable spinnaker poles and bowsprits will be permitted for the purpose of setting asymmetrical spinnakers. This amends RRS 50.2 and 50.3.

2 NOTICES TO COMPETITORS

- 2.1 Notices to Competitors will be posted on the Official Notice Board located in the MYC Clubhouse.

3 CHANGES TO THE SAILING INSTRUCTIONS

- 3.1 Any change to the Sailing Instructions will be posted before 0830hrs on the day it will take effect except that any change to the schedule of races will be posted prior to 1800hrs on the day before it will take effect.
- 3.2 Any change to the Sailing Instructions made 'afloat' will be indicated by the display of Code Flag L and accompanied by two sound signals. The change will be communicated on the designated course VHF channel 72 and/or displayed on the committee boat.

4 SIGNALS MADE ASHORE

- 4.1 Signals made ashore will be displayed from the Signal Mast on the end of the MYC wharf.
- 4.2 When flag AP is displayed ashore, '1 minute' is replaced with 'not less than 60 minutes' in the race signal AP.

5 RACING AREA

- 5.1 Racing will be conducted on the waters of Sydney Harbour.
- 5.2 The starting area will be in the vicinity of North Harbour
- 5.3 The Committee Vessel will announce the starting area on the Race Management Channel VHF 72.

6 COURSES

- 6.1 The courses are described in Appendices A1, A2, A3 and A4.
- 6.2 Boats shall pass on the safe water side of the following Cardinal Marks:
 - a) Gowlland Bombora (Dobroyd) – All Marks
 - b) Sow and Pigs Reef– All Marks
 - c) Shark Island– South and West Marks

- 6.3 Boats shall not sail in the following prohibited areas:
- a) The area bounded by imaginary lines projected from the shore joining the West, South and East Cardinal Marks surrounding Gowlland Bombora.
 - b) The area bounded by imaginary lines joining the North, East, South and West Cardinal Marks surrounding Sow and Pigs Reef.
 - c) The Area between AS Mark Shark Island and Shark Island is a continuing obstruction and no boat shall pass between them.
- 6.4 For the purpose of RRS 19 and 20, all Cardinal Marks surrounding the Gowlland Bombora and the Sow and Pigs Reef and all imaginary straight lines projected between such marks, shall be deemed obstructions.
- 6.5 All competitors are requested to remain to the starboard side of shipping channels where practicable.

10 ALTERNATIVE PENALTIES

- 10.1 For an infringement of RRS Part 2, the Two-Turns Penalty (RRS 44.2) shall apply.
- 10.2 For an infringement of any other rule or requirement, the Scoring Penalties of RRS 44.3 shall apply. The penalty shall be computed as a percentage of the number of entries in the relevant division.

11 ABANDONED RACES

Abandoned races will not be re-sailed. Race fees are non-refundable for abandoned races.

12 PROTESTS

- 12.1 Protest forms are available at the Sailing Office. Protests and requests for redress or reopening shall be delivered there within the appropriate time limit.
- 12.2 The protest time limit is 90 minutes after the last boat has finished the last race of the day or the race committee signals no more racing today, whichever is later.
- 12.3 Notices will inform competitors of hearings in which they are parties or named as witnesses.
- 12.4 Notices of protests by the race committee, technical committee or protest committee will be posted on the noticeboard on the ground floor of MHYC to inform boats under RRS 61.1(b).

13 RADIO COMMUNICATION

- 13.1 Except in an emergency, while racing a boat shall neither make radio transmissions nor receive radio transmissions not available to all boats. This restriction also applies to mobile telephones.
- 13.2 Yachts shall maintain a listening watch on VHF Channel 72 prior to and for the duration of the race.
- 13.3 Competitors retiring from the race shall advise the RC on Channel 72 or the Sailing Office by phone 99774949 as soon as practicable.

15 RESPONSIBILITY

- 15.1 Competitors participate in the MYC Women's Challenge at their own risk. Special attention is drawn to RRS Fundamental Rule 3, which states: "The responsibility for a boat's decision to participate in a race or to continue racing is hers alone".
- 15.2 The Organising Authority, Event Sponsors, and their respective officers, employees, volunteers and members accept no liability for any injury, loss or damage that may be suffered by any competitor, and any liability for harm to persons that results from breach of an express or implied warranty that the MYC Women's Challenge and all services relating thereto will be conducted or rendered with reasonable care and skill is excluded.
- 15.3 Neither MYC, nor the event sponsors, are responsible for the seaworthiness of a boat whose entry is accepted or the sufficiency or adequacy of its equipment.

WOMEN'S CHALLENGE – SATURDAY, 27TH MARCH 2021

LASERS, HANSE303 DINGHIES, JUNIOR CLASSES

1. Schedule of Races

- 1.1 Racing is scheduled for Saturday, 27th March 2021.
- 1.2 There will be a pre-race briefing for the Hanse 303 Dinghy Class on the MYC rigging deck at 0930.
- 1.3 There will be a pre-race briefing for the BICs at 1320 and lasers at 1330 on the MYC rigging deck.
- 1.4 A maximum of 50 people for pre-briefing due to COVID regulations. The Race Committee will determine whether 2 pre-briefings are required.
- 1.5 There is up to 3 races scheduled for the Hanse Dinghy class.
- 1.6 There are up to three races scheduled for all other classes/divisions.
- 1.7 A division must be constituted by a minimum of three boats.

2. Class Flags

2.1 The class flags will be as follows:

CLASS	FLAG	Earliest Warning
Hanse 303 Dinghy – Female Helm	Numeral Pennant 1	10:00
Laser – Female Helm	Laser Class flag	14:40
Op'n Bic – Female Helm	Op'n Bic class flag	14:20

3. The Courses

- 3.1 Courses for Hanse Dinghy, Op'n Bic, are show in Appendix A1.
- 3.2 Courses for Laser classes are shown in Appendix A2.

4. The Start

- 4.1 All races will be scratch starts from the Committee Boat. The starting line will be between the flagstaff on the Committee Boat at the starboard end and an orange spherical buoy at the port end.

5. The Finish

- 5.1 The finish will be on the Committee Boat. The Committee Boat will fly the MYC Burgee and a Blue Flag when it is on station.

6. Time Limits

- 6.1 The time limit for each race shall be 90 minutes or shorter at the discretion of the Race Committee.

7. Further Information

- 7.1 A presentation will take place back at the club after racing.

WOMEN'S CHALLENGE – SUNDAY, 28TH MARCH 2021

YACHTS, YNGLINGS, J24 CLASSES

1. Schedule of Races

1.1 Racing is scheduled for **Sunday, 28th March 2021**.

1.2 The following classes/divisions may be sailed:

- Yachts – All Female – Division 1 & Division 2
- Yachts – Female Helm – Division 1 & Division 2
- Ynglings – Female Helm – are to be included in Div 2, check start list
- J24s – Female Helm – are to be included in Div 2, check start list.

1.3 There is one race scheduled for each class/division.

1.4 A division must be constituted by a minimum of four boats.

1.5 The scheduled time of the warning signal for each class or division is shown below (to be read in conjunction with RRS26). Races will be started no earlier than times shown. Times shall be taken from visual signals; the failure of a sound signal shall be disregarded.

1300 hrs	Yachts – All Female – Div 1	Class Flag E
1300 hrs	Yachts – Female Helm – Div 1	Class Flag E
1310 hrs	Yachts – All Female – Div 2	Class Flag F
1310 hrs	Yachts – Female Helm – Div 2	Class Flag F

2. Class Flags

2.1 The class flags will be as follows:

CLASS	FLAG
Yachts – All Female – Div 1	Class Flag E
Yachts – Female Helm – Div 1	Class Flag E
Yachts – All Female – Div 2	Class Flag F
Yachts – Female Helm – Div 2	Class Flag F

3. The Courses

3.1 Courses for Yachts – Division 1 are shown in **Appendix A3**.

3.2 Courses for Yachts – Division 2, Ynglings and J24s are shown in **Appendix A4**.

4. The Start

4.1 All races will be scratch starts from the Committee Boat. The starting line will be between the flagstaff on the Committee Boat at the starboard end and an orange spherical buoy at the port end.

5. The Finish

5.1 The finish will be on the Committee Boat. The Committee Boat will fly the MYC Burgee and a Blue Flag when it is on station.

6. Time Limits

6.1 Subject to 7.2 and 7.3, the time limit for yachts shall be 1700 hours.

6.2 If the first boat in a division finishes between 1630 hours and 1700 hours the time limit shall be extended by 30 minutes from the finishing time of the first boat in that division.

6.3 If a race is postponed for any reason the time limit will be extended by the length of the postponement or for 30 minutes whichever is less.

7. Further Information

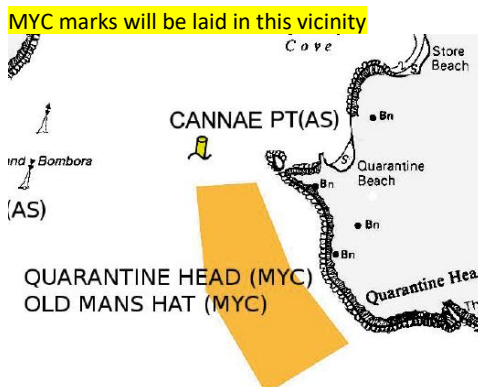
7.1 There will be a presentation back at the club this year after racing.

7.2 Crew Registration is required for the event for COVID Safe sailing through your Sailsys entry.

FIXED AUSTRALIAN SAILING (AS) MARKS

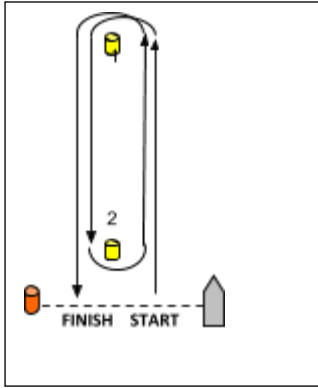
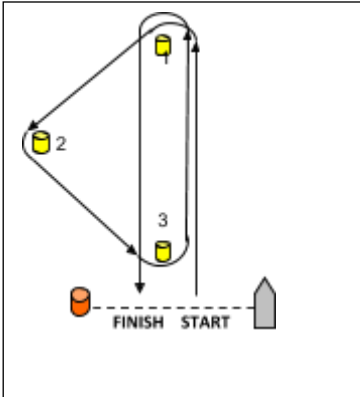
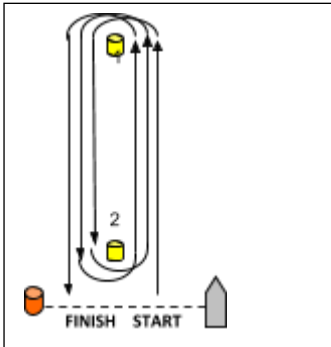
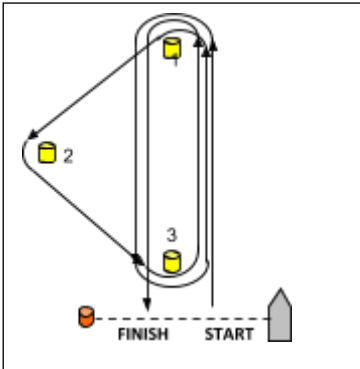
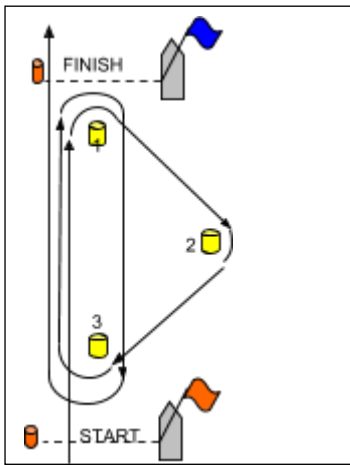
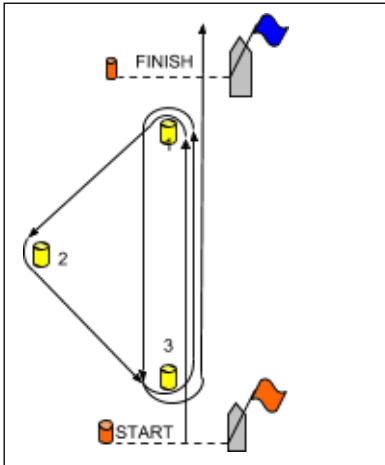
Previously Yachting Australia or Yachting New South Wales (YA Marks), these are spar shape and yellow in colour. Locations are approximate and marks may be absent after heavy weather.

ID	LOCATION	ID	LOCATION
CBN	AS Mark Chowder Bay (North) Lat. 33-50-357 Lon. 151-15-593	ME	AS Mark Manly East Lat. 33-48-196 Lon. 151-16-726
CP	AS Mark Cannae Point Lat. 33-48-847 Lon. 151-16-895	MW	AS Mark Manly West Lat. 33-48-176 Lon. 151-16-625
EB	AS Mark Edwards Beach Lat. 33-49-252 Lon. 151-15-283	OB	AS Mark Obelisk Bay Lat. 33-49-872 Lon. 151-15-923
EC	AS Mark East Channel Lat. 33-50-514 Lon. 151-16-176	RB	AS Mark Rose Bay Lat. 33-51-747 Lon. 151-15-972
GP	AS Mark Grotto Point Lat. 33-48-987 Lon. 151-16-133	SP	AS Mark Sow & Pigs SW of reef (<i>Beashel Buoy</i>) Lat. 33-50-305 Lon. 151-16-177
LB	AS Mark Lady Bay Lat. 33-50-081 Lon. 151-16-612	4B	AS Mark Forty Baskets Lat. 33 48.143 Lon. 151 16.537



APPENDIX A1 – HANSE 303, OP’N BIC, OPTI, MY and PJ

Courses may be sailed to Port or Starboard as indicated by a red or green flag displayed on the Committee Boat. If no flag is displayed the courses will be sailed as shown. For all courses, the leg length from start line to top mark should be around 0.4NM.)

<p>Course 1 Start Mark 1 Mark 2 Mark 1 Finish</p> 	<p>Course 2 Start Mark 1 Mark 2 Mark 3 Mark 1 Finish</p> 
<p>Course 3 Start Mark 1 Mark 2 Mark 1 Mark 2 Mark 1 Finish</p> 	<p>Course 4 Start Mark 1 Mark 3 Mark 1 Mark 2 Mark 3 Mark 1 Finish</p> 
<p>Course 5 Start Mark 1 Mark 2 Mark 3 Mark 1 Mark 3</p> 	<p>Course 6 Start Mark 1 Mark 2 Mark 3 Mark 1 Mark 3</p> 

APPENDIX A2 – LASER and FLYING 11 COURSES

All marks to port unless otherwise indicated. All distances are approximate.

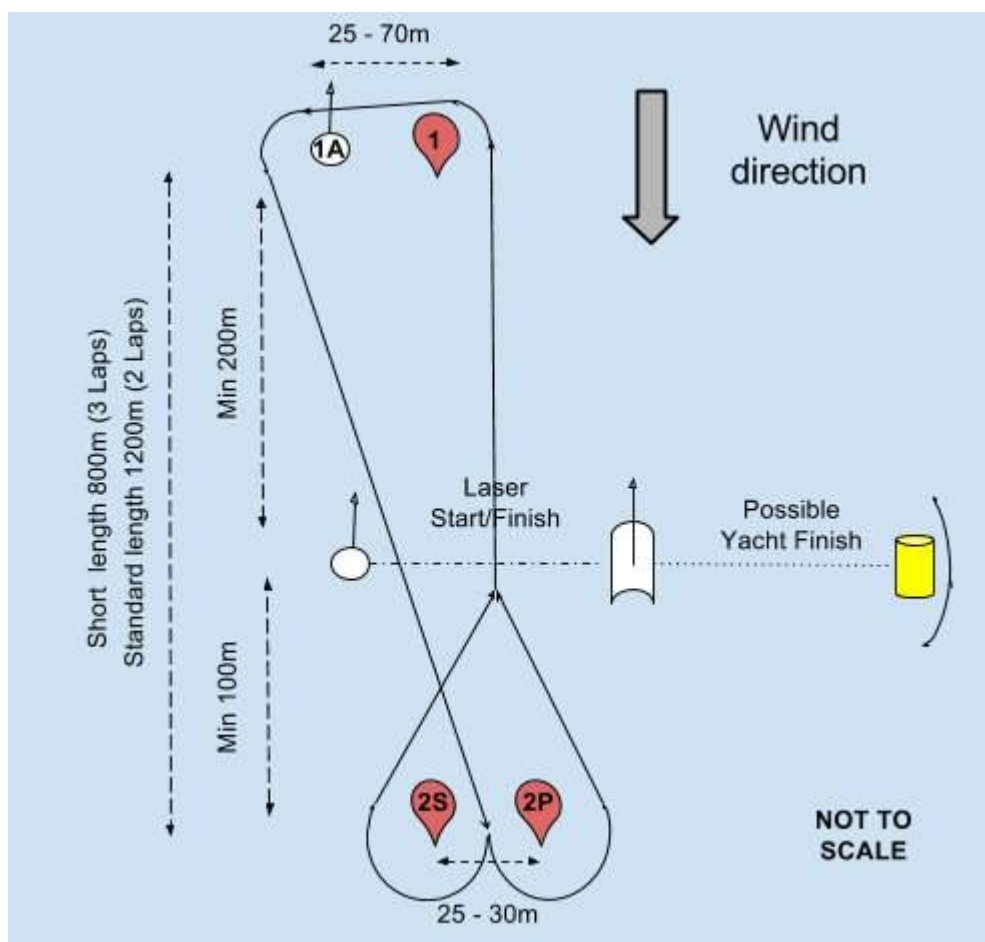
The Course (as described in Table 1 below) shall be displayed on a board on the stern of the start boat, before or with the Warning Signal.

Marks 1, 1A shall be rounded to port.

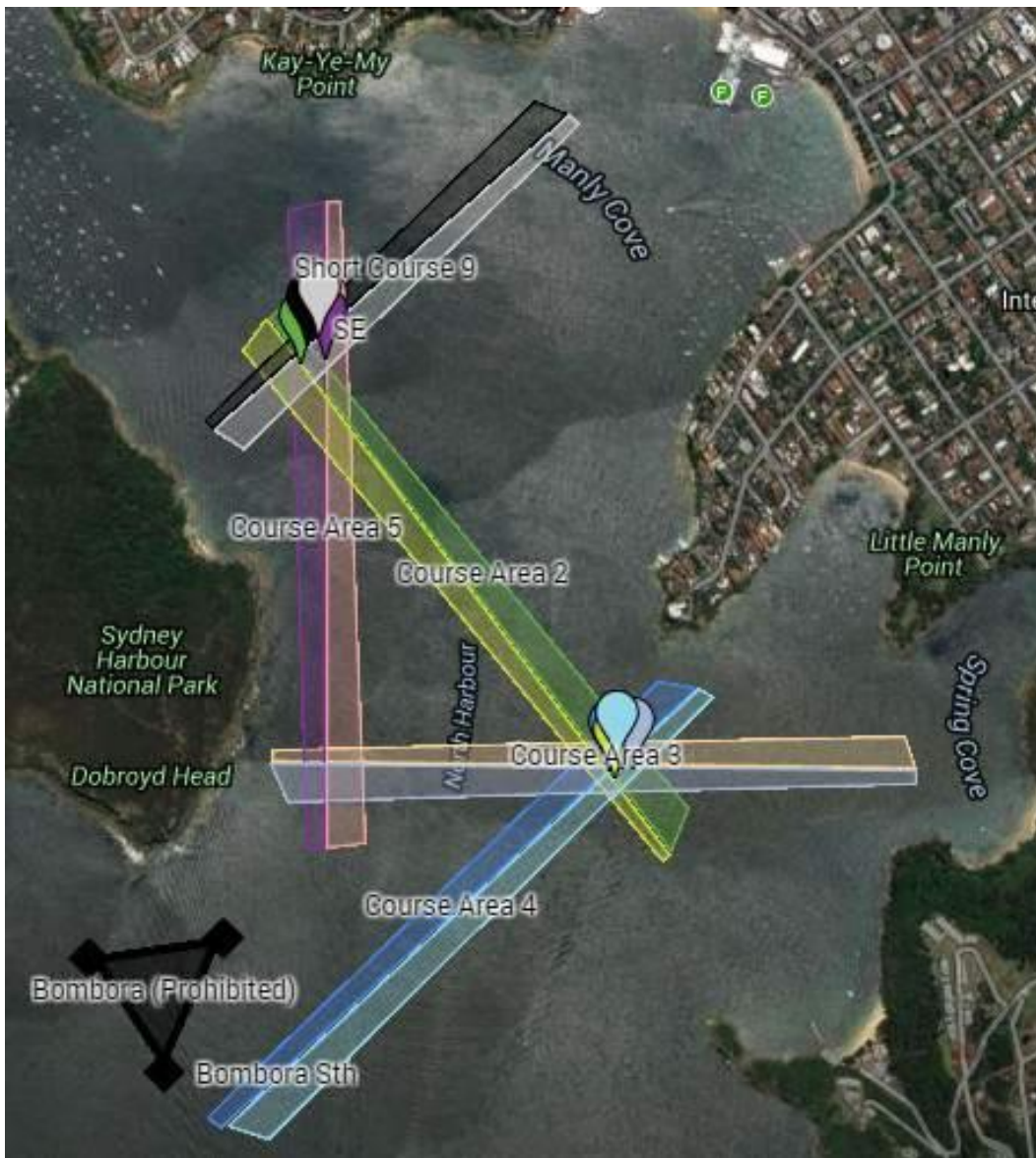
Marks 2S/2P may be replaced by a singular Mark 2, which shall be rounded to port and coloured the same as the two gate marks it replaces.

The indicative course layout is shown in Illustration 1. The diagram is approximate only and is not to scale.

Course	Course Descriptions
2	Start – 1 – 1A – 2S/2P – 1 – 1A – 2S/2P – Finish
3	Start – 1 – 1A – 2S/2P – 1 – 1A – 2S/2P – 1 – 1A – 2S/2P – Finish



APPENDIX A2 – LASER, FLYING 11 COURSES



APPENDIX A3 - WOMEN'S CHALLENGE DIV 1 COURSES

All marks to starboard unless otherwise indicated with a (p). All distances are approximate.

Course 1 NE 12.5nm

Start Reef Beach,
Manly MYC, Rocky AS,
Cannae AS, Taylors Bay AS
Cannae AS, Obelisk AS,
Finish North Harbour

Course 2 E 11.5nm

Start 40 Baskets,
Manly MYC,
Cannae AS, Edwards AS
Quarantine Head MYC (p), Edwards AS
Quarantine Head MYC (p), Edwards AS
Quarantine Head MYC (p),
Finish North Harbour

Course 3 SE 12.5nm

Start 40 Baskets,
Cannae AS, 40 Baskets AS,
Lady Bay AS, Grotto AS,
Lady Bay AS, Edwards AS,
Lady Bay AS, Grotto AS,
Lady Bay AS,
Finish North Harbour

Course 4 S 12.5nm

Start Fairlight Beach,
Lady Bay AS,
Manly West & East AS, Eastern Channel AS, Manly West &
East AS, Lady Bay AS,
Finish North Harbour or Triangles

Course 5 SW 12.5nm

Start Little Manly,
Rocky AS,
Cannae AS, Taylors AS,
Cannae AS, Chowder North AS,
Finish North Harbour

Course 6 W 12.5nm

Start Quarantine Beach,
Edwards AS, Quarantine Head MYC (p),
Edwards AS, Quarantine Head MYC (p),
Edwards AS, Quarantine Head MYC (p),
Edwards AS,
Finish North Harbour

Course 7 NW 12nm

Start Quarantine Beach,
40 Baskets AS, Old Man's Hat MYC,
40 Baskets AS, Old Man's Hat MYC,
Grotto AS, Lady Bay AS,
Grotto AS, Lady Bay AS,
Grotto AS,
Finish North Harbour

Course 8 N 12.5nm

Start Reef Beach,
Manly MYC, Lady Bay AS,
Manly West & East AS, Beashal AS,
Manly West & East AS, Lady Bay AS,
Finish North Harbour

Course 9 NE alt 12.5nm

Start Reef Beach,
Manly MYC, Lady Bay AS
Taylors Bay AS, Cannae AS
Taylors Bay AS,
Finish North Harbour

Course 10 SE alt 12nm

Start Fairlight Beach,
Quarantine Head MYC (p), 40 Baskets AS
Quarantine Head MYC (p), 40 Baskets AS
Quarantine Head MYC (p), 40 Baskets AS
Quarantine Head MYC (p), 40 Baskets AS
Quarantine Head MYC (p),
Finish North Harbour

Course 11 S Alt 13nm

Start Fairlight Beach,
Lady Bay AS,
Manly West & East AS,
Nielson Park AS, Obelisk AS,
Shark Island AS & Shark Island,
Finish North Harbour

APPENDIX A4 – WOMEN’S CHALLENGE DIV 2 COURSES

All marks to starboard unless otherwise indicated with a **(p)**. All distances are approximate.

Course 1 NE 9.5nm

Start Reef Beach,
Manly MYC, Rocky AS,
Cannae AS, Obelisk AS,
Cannae AS, Obelisk AS,
Finish North Harbour

Course 2 E 10nm

Start 40 Baskets,
Manly MYC,
Cannae AS, Grotto AS,
Cannae AS, Edwards AS,
Quarantine Head MYC (p), Edwards AS
Quarantine Head MYC **(p)**,
Finish North Harbour

Course 3 SE 10.5nm

Start 40 Baskets,
Cannae AS, 40 Baskets AS
Lady Bay AS, Grotto AS
Lady Bay AS, Grotto AS
Lady Bay AS,
Finish North Harbour

Course 4 S 10.5nm

Start Fairlight,
Cannae AS, Manly West & East AS,
Eastern Channel AS,
Manly West & East AS
Lady Bay AS,
Finish North Harbour

Course 5 SW 10.5nm

Start Little Manly,
Rocky AS,
Cannae AS, Obelisk AS,
Cannae AS, Chowder North AS,
Finish North Harbour

Course 6 W 10nm

Start Quarantine Beach,
Edwards AS, Quarantine Head MYC **(p)**
Edwards AS, Quarantine Head MYC **(p)**
Edwards AS,
Finish North Harbour

Course 7 NW 10nm

Start Quarantine Beach,
40 Baskets AS, Old Man's Hat MYC,
40 Baskets AS, Lady Bay AS,
Grotto AS, Lady Bay AS,
Grotto AS,
Finish North Harbour

Course 8 N 10nm

Start Reef Beach,
Manly MYC, Cannae AS,
Manly West & East AS, Lady Bay AS,
Manly West & East AS, Lady Bay AS,
Finish North Harbour

Course 9 NE alt 10nm

Start Reef Beach,
Manly MYC, Lady Bay AS
Obelisk AS, Cannae AS
Taylors Bay AS,
Finish North Harbour

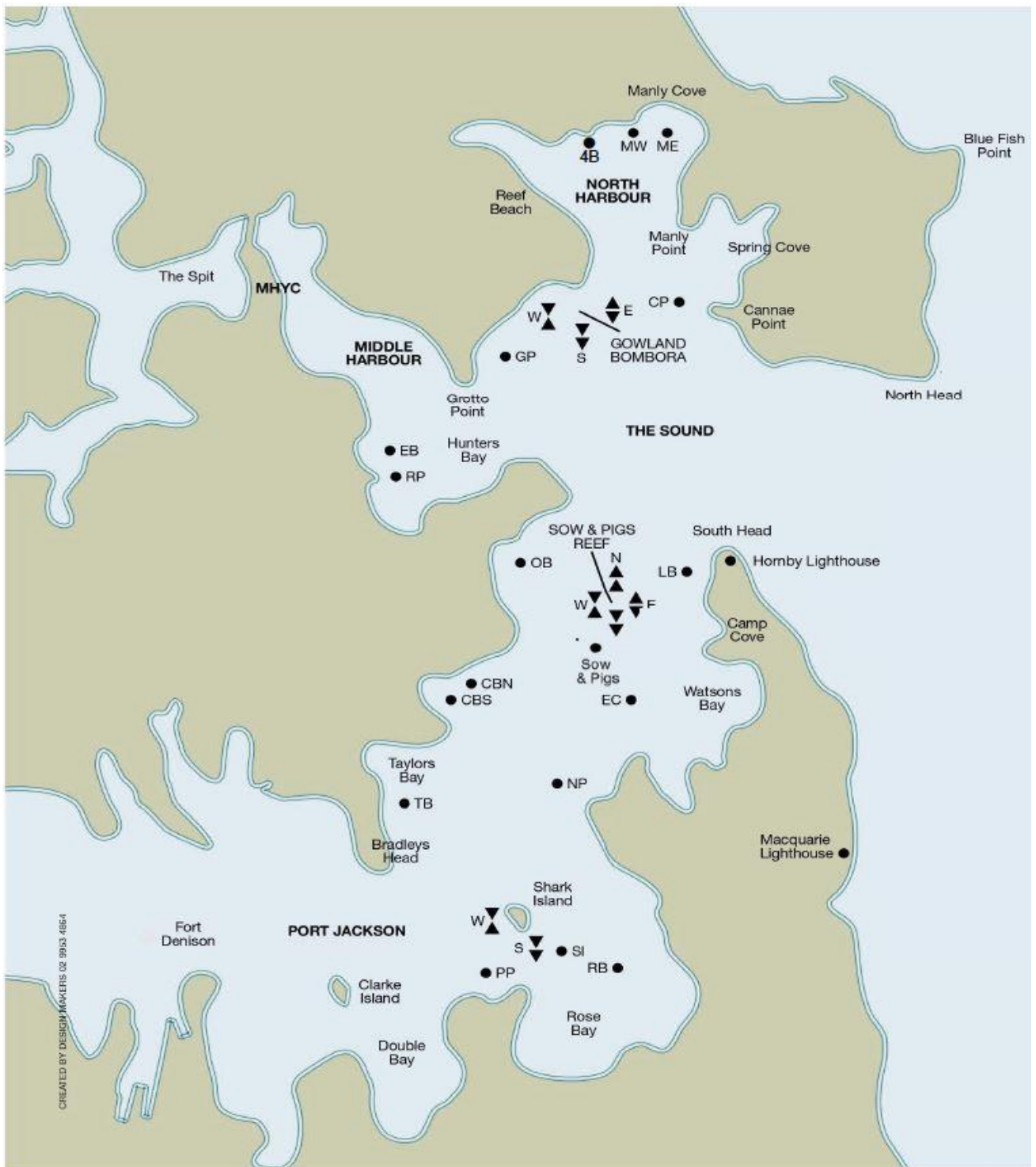
Course 10 SE alt 9.5nm

Start Fairlight Beach,
Quarantine Head MYC **(p)**, 40 Baskets AS
Quarantine Head MYC **(p)**, 40 Baskets AS
Quarantine Head MYC **(p)**, 40 Baskets AS
Quarantine Head MYC **(p)**,
Finish North Harbour

Course 11 S Alt 10nm

Start Fairlight Beach,
Lady Bay AS,
Nielson Park AS,
Obelisk AS,
Shark Island AS & Shark Island,
Finish North Harbour

LOCATION OF HARBOUR MARKS



MYC Committee boat



MYC Laid marks are relatively small red buoys with MYC on them