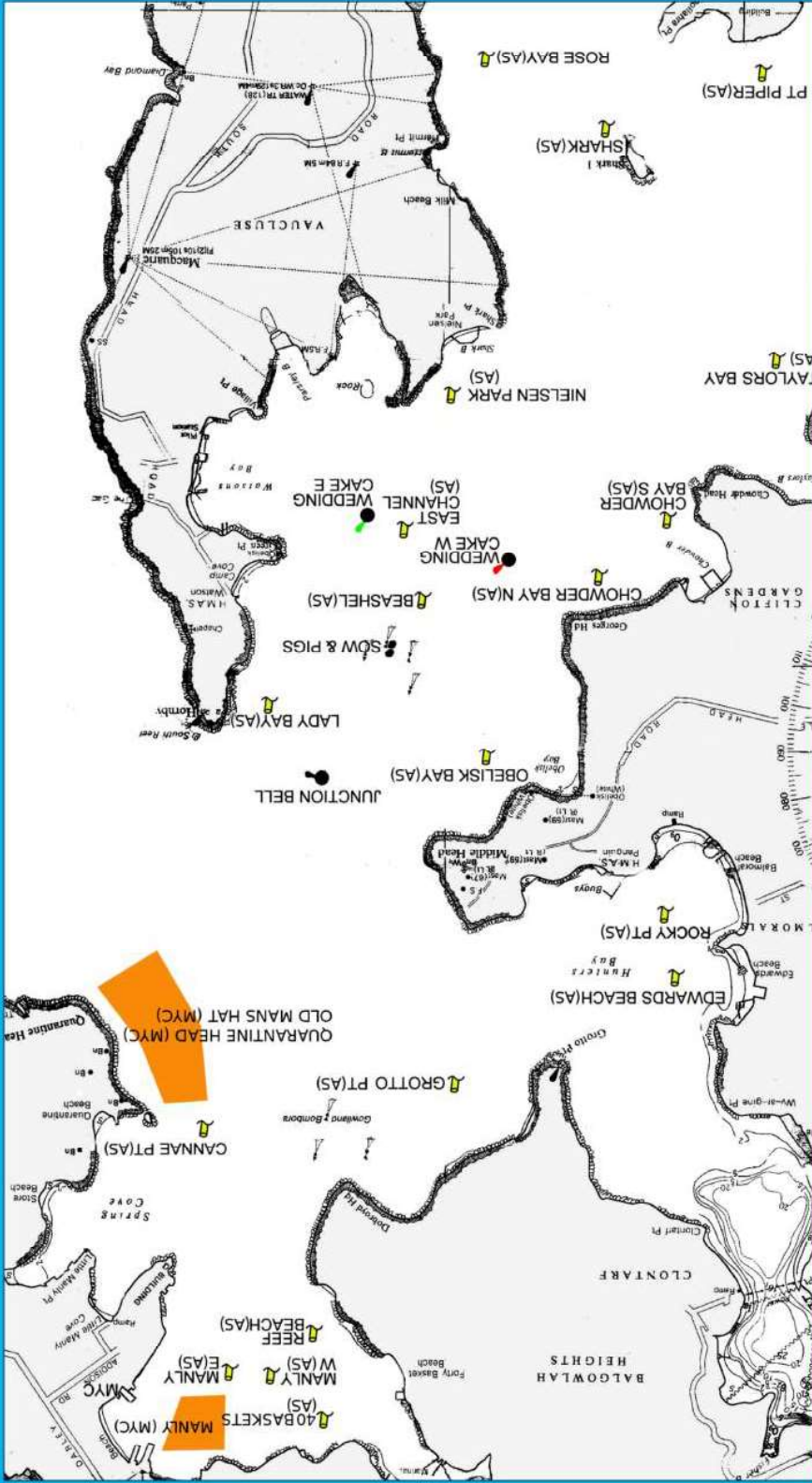


LOCATION OF HARBOUR MARKS



AP Flag

N Flag

N + A Flags

Abandoned
 all racing for
 the day

C Flag

Alternate Start

L Flag

Contact RC

P Flag

Preparatory

X Flag

Individual recall

General

recall

S Flag

Short course

On Station

at finish

Q Flag

Triangles finish

1

2

3

4

Emergency
 Services:
 000

Marine Rescue:
 VHF 16

Race Committee:
 VHF 72
 99774949

Harbour Control:
 VHF 13